



# Welcome to

# **BIOLAB** DIAGNOSTICS LTD.



+88 09639246330-3  
+88 01962-690666



**Email**  
info@biolabds.com



**Website**  
www.biolabds.com



Rupayan Shelford (14th floor), 23/6, Mirpur Road Shyamoli,  
Dhaka-1207, Bangladesh



# Table of Content

About us	03
Mission, Vision and Commitment	04
Core Values	05
Our Strengths	06
Message from the Chairman	07
Message from the Founder & Managing Director	08
Message from the Chief executive officer (CEO)	09
Reporting Consultants	10
Our Services	11 – 13
Infrastructure & Technology	14 – 18
Collaboration with Genofax (USA)	19
Future Plans	20 – 22
BioLab Family Health card	23
Clients & Partners	24
Certifications & Compliance	25



## ABOUT US

**BioLab Diagnostics Limited** is an **ISO 9001:2015 certified** Molecular Diagnostics, Research & Clinical Reference Laboratory dedicated to delivering accurate, reliable, and timely diagnostic results.

Equipped with advanced molecular technology and managed by skilled professionals, BioLab ensures precision and consistency in every test. We follow strict international quality standards to provide dependable results across a wide range of molecular and clinical analyses.

With our Home Sample Collection service, we bring safe and convenient testing directly to patients. At BioLab, we stand for accuracy, integrity, and innovation — empowering better healthcare through science and trust.



## MISSION

To deliver precise, research-driven diagnostic solutions through advanced molecular technology, a reliable clinical reference laboratory, and personalized consultation — ensuring every patient receives accurate results with compassion and trust.



## VISION

To be the most trusted and innovative molecular diagnostics and research-based clinical laboratory in Bangladesh, leading the way in excellence, accessibility, and patient-centered healthcare through home sample collection and expert consultation.



## COMMITMENT

We are committed to redefining healthcare diagnostics through precision-driven science, compassionate care, and unwavering trust — ensuring better health outcomes for every patient, every time.





- » **PRECISION:** We ensure scientific accuracy and excellence in every test.
- » **CARE:** We serve with empathy, compassion, and personalized attention.
- » **TRUST:** We build confidence through integrity, transparency, and reliability.
- » **INNOVATION:** We embrace technology and research to advance diagnostic excellence.
- » **QUALITY:** We maintain international standards to deliver consistent, dependable results.
- » **ACCESSIBILITY:** We bring advanced healthcare closer to every home and community.



## Expert Team

Skilled molecular technologists and medical specialists ensuring precise, reliable diagnostic output.



## ISO Certified

Tested, validated, and quality-assured under internationally approved laboratory standards.



## Quality Assured

Every test follows strict quality-control protocols to ensure accuracy and consistency.



## Fast & Accurate

Efficient workflow and automated systems help deliver high-accuracy reports in minimal time.



## Affordable Care

Comprehensive diagnostic packages designed to deliver high-quality testing at reasonable costs.



## Research Driven

Strong focus on innovation, molecular research, and continuous scientific improvement.



## Ethical Service

Transparent processes, ethical practices, and patient-centered care at every stage.





## MESSAGE FROM THE **CHAIRMAN**

At BioLab Diagnostics Limited, our vision has always been to build a diagnostic institution founded on trust, ethics, and scientific excellence. We believe that quality healthcare begins with accurate information, and every result we deliver carries the responsibility of shaping life-changing decisions.

From advanced molecular diagnostics to essential clinical testing, BioLab has grown with a commitment to integrity, innovation, and international standards. Our team works with a deep sense of purpose — ensuring that every test reflects precision, professionalism, and genuine care for every patient we serve.\*

As we continue to expand, our priority remains to strengthen diagnostic reliability across Bangladesh, invest in modern technology, and uphold the values that define us. Together, we aim to create a healthier future supported by accurate science and unwavering trust.

## Monisha Roy Moon

Chairman



## MESSAGE FROM THE **FOUNDER & MANAGING DIRECTOR**

At BioLab Diagnostics Limited, we believe that accuracy and compassion are at the heart of quality healthcare. Our goal is to make advanced diagnostics accessible, reliable, and patient-centered, ensuring every report reflects our commitment to precision and trust.

With a strong foundation of integrity, quality, and innovation, BioLab continues to set new standards in molecular and clinical diagnostics. From our modern laboratories to our home sample collection service, we work to deliver dependable results with professionalism and care.

As we move forward, we remain focused on innovation, skill development, and sustainable growth, empowering better healthcare outcomes and strengthening confidence among patients, physicians, and partners across Bangladesh.

## SK Mondol

Founder & Managing Director





## MESSAGE FROM THE **CHIEF EXECUTIVE OFFICER (CEO)**

A successful company is built on the foundation of honesty, integrity, and a team of dedicated professionals. Our mission is to deliver precision, care, and trust in every aspect of diagnostic healthcare. We believe that accurate testing is not merely a process — it is a promise to every patient seeking clarity, reassurance, and hope.

Through advanced molecular diagnostics, rigorous research, and personalized consultation services, we strive to bridge science with compassion. Our commitment is to provide accessible, reliable, and ethical healthcare solutions for all, ensuring that every patient receives the highest standard of care.

With the support of our talented team, healthcare partners, and collaborators, we are continuously innovating and expanding our services, including home sample collection, to reach communities across Bangladesh. Together, we are shaping a healthier future — one accurate result at a time.

### Md. Tanjirul Alam

Chief executive officer (CEO)

## DEPARTMENT HISTOPATHOLOGY AND CLINICAL PATHOLOGY

### **Prof. Dr. MASHUD PARVEZ**

MBBS, (CMC) MD (Pathology) Professor, Dept. of Histopathology  
Bangladesh Shishu Hospital & Institute.

## DEPARTMENT BIOCHEMISTRY AND IMMUNOLOGY

### **Prof. Dr. BIDHAN CHANDRA SARKAR**

MSc(RU), MPhil(Immunology) PhD(UOM, Japan)  
Biochemistry & Molecular Biology

## MICROBIOLOGY

### **PROF. DR. M.M. MONZUR HASSAN**

MBBS, M Phil (Micro), JICA Fellow (Japan) FCGP  
Consultant, Microbiologist (BUET)

### **KOBIRUL ISLAM**

M.Sc. Microbiology Jagannath University (JnU),  
B.Sc. in Microbiology Incharge

## MOLECULAR BIOLOGY

### **Prof.Dr.Ashesh K.Chowdhury**

MBBS(DMC), M.Phil(Imm) PhD (ICGEB) Senior  
Consultant Molecular Biology BioLab Diagnostics  
Limited

### **Prof. Dr. BIDHAN CHANDRA SARKAR**

MSc(RU), MPhil(Immunology) PhD(UOM, Japan)  
Biochemistry & Molecular Biology

### **Dr. HASI RANI SAHA**

MSc(RU), PhD(UOM, Japan) Molecular  
Biology

### **Dr. MD. MONIRUL ISLAM**

B.Sc. & M.Sc. (Biotechnology & Genetic Engineering) PhD  
(Pharmacogenomics) Post-doctorate (Molecular  
Pathology) Consultant PCR & Molecular Diagnostics  
Section LabAid Limited (Diagnostics).





### **MOLECULAR DIAGNOSTICS (PCR, RT-PCR, QPCR):**

Advanced nucleic acid-based testing for rapid and precise detection of infectious diseases, viral loads, and genetic markers.



### **GENETIC TESTING & NGS-BASED PANELS:**

Comprehensive DNA and RNA sequencing panels for inherited disorders, cancer genetics, carrier screening, and targeted mutation analysis.



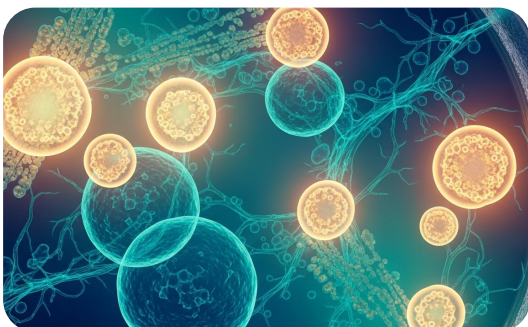
### **SEROLOGY & IMMUNOLOGY:**

Antigen-antibody testing to diagnose infections, autoimmune disorders, immune response profiling, and allergy screening.



### **BIOCHEMISTRY & HEMATOLOGY:**

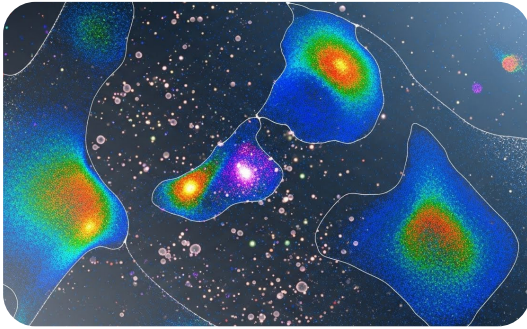
Routine and specialized tests assessing organ function, metabolism, blood components, anemia profiling, and coagulation status.



### **MICROBIOLOGY & CULTURE SERVICES:**

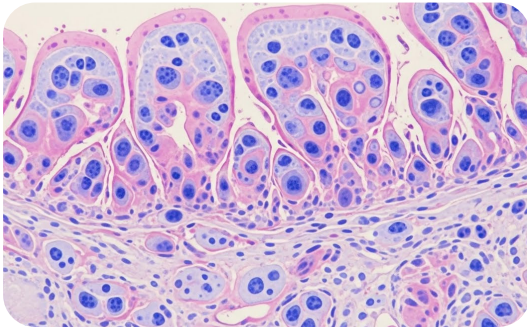
Accurate identification of bacteria, fungi, and parasites through culture, sensitivity testing, and advanced microbial analysis.





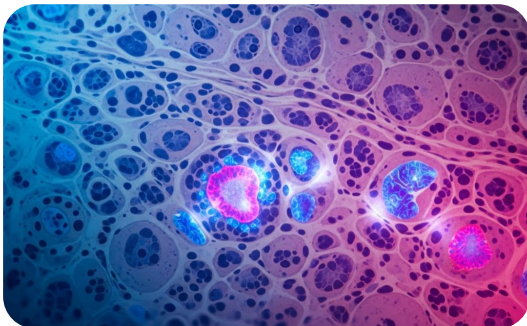
### **FLOW CYTOMETRY SERVICES:**

High-precision cell analysis for immunophenotyping, leukemia/lymphoma workups, and advanced hematological investigations.



### **HISTOPATHOLOGY & CYTOPATHOLOGY:**

Microscopic examination of tissues and cells for tumor diagnosis, biopsy evaluation, FNAC, and cellular abnormality detection.



### **IMMUNOHISTOCHEMISTRY (IHC):**

Marker-based tissue staining to identify specific proteins, aiding in cancer diagnosis, tumor classification, and targeted therapy decisions.



### **SPECIALIZED DIAGNOSTICS & ADVANCED BIOMARKER TESTING:**

Targeted molecular markers, tumor biomarkers, hormonal markers, and complex diagnostic panels for precision medicine.



### **COMPREHENSIVE HEALTH PACKAGES (INDIVIDUAL, FAMILY & CORPORATE):**

Complete diagnostic packages designed for preventive care, routine health evaluation, and corporate employee wellness programs.





## **PREVENTIVE SCREENING PACKAGES:**

Early detection programs focusing on chronic diseases, lifestyle disorders, and age-specific health risks.



## **DOCTOR CONSULTATION & TELEMEDICINE SUPPORT:**

Professional medical guidance and remote consultation services for faster diagnosis, follow-up, and patient support.



## **HOME SAMPLE COLLECTION SERVICES:**

Safe, convenient, and hygienic sample collection from home or office, following strict cold-chain and ISO-standard protocols.



## **RESEARCH-BASED TESTING SUPPORT:**

Advanced lab support for academic and clinical research, including molecular assays, analytical validation, and data assistance.



## **RESEARCH EDITING & SCIENTIFIC SUPPORT SERVICES:**

Professional editing, formatting, and scientific guidance for manuscripts, research papers, theses, and medical publications.

## CLINICAL PATHOLOGY & HEMATOLOGY

### SEBIA – Minicap

Country Origin – France



### Sysmex – XN –550

Country Origin – Japan



Thermo Fisher

Scientific–INDIKO PLUS

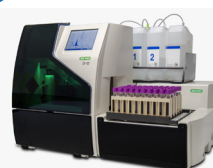
Country Origin–Finland



### CLINICAL PATHOLOGY & HEMATOLOGY

### BIO RAD D10

Country Origin – USA



### Varioskan™ LUX Multimode Microplate Reader from Thermo Fisher Scientific

Country Origin – USA



### HumaClot Pro Automated Coagulation Analyzer

Country Origin – USA



## MOLECULAR DIAGNOSTICS

### QuantStudio–5

by Applied Biosystem

Country Origin – USA



### PCR & qPCR Products – Bio-Rad

Country Origin – USA



### Class II Biological Safety Cabinet | Esco Lifesciences

Country Origin – USA



### iPonatic III Pro – Molecular Diagnostic System

Country Origin – China



### MOLECULAR DIAGNOSTICS

BIOCHEMISTRY

**SIEMENS –  
Dimension EXI**  
Country Origin Germany



**Alinity**  
Country Origin – USA



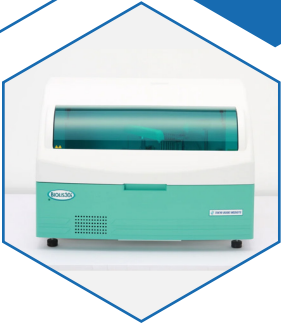
**NORMAN-CL211 Rapid  
Chemiluminescence  
Analyzer |  
chemiluminescence**  
Country Origin-China



**Lifotronic H8**  
Country Origin China



**BioLis30i**  
Country Origin – Japan



**Autobio**  
Country Origin- Belgium



IMMUNOLOGY

**EVOLIS Twin Plus  
by BIO-RAD**  
Country Origin USA



**LIAISON XL by  
DiaSorin**  
Country Origin Italy



**SNIBE Maglumi X3**  
Country Origin – China



**DIRUI CM 180**  
Country Origin China



## MICROBIOLOGY

### GHM-BT240 Auto Blood Culture System

Country Origin-China  
Blood Culture



### Oven by JSR

Country Origin - KOREA



### Olympus CX23

Country Origin-Japan



### G4 Class II Type A2 Biological Safety Cabinet

Country Origin-Singapore



## MICROBIOLOGY

## RADIOLOGY & IMAGING

### E-cube 8 LE

Ultra-sound & ECO



### Mindray Consona N6

Ultra-sound & ECO



### JPI X-ray

500ma



## RADIOLOGY & IMAGING

### Dental Chair

FOSHAN AY-215 A1 Luxury  
dental Unit



### Digital ECG Machine



### KR-800 Auto Kerato-Refractometer





## HISTOPATHOLOGY & IMMUNOHISTOCHEMISTRY

### Thermo Scientific Citadel automatic carousel tissue processors

Country Origin-USA



### HistoCore AUTOCUT – Automated Rotary Microtome

Country Origin-USA



### Trimodular Tissue Embedding Center, TEC2900T

Country Origin-USA

Histopathology and IHC are vital diagnostic tools. Histopathology examines tissue architecture to identify abnormalities, inflammation, infections, and cancer. Immunohistochemistry adds precision by detecting specific cellular markers, helping classify tumor types, determine origin, and guide targeted therapies. Together, they provide accurate, detailed insights essential for effective diagnosis and treatment planning.



## **DNA next-generation sequencer NextSeq 550**

Country Origin-USA

### **DEPARTMENT: NEXT-GENERATION SEQUENCING TECHNOLOGY**

NGS identifies genetic variations quickly and accurately, helping diagnose hereditary diseases, cancers, infections, and guiding targeted treatment by analyzing millions of DNA sequences simultaneously from a single



## **BD Automate Clinical Flow Cytometry**

Country Origin-USA

### **DEPARTMENT: FLOW CYTOMETRY**

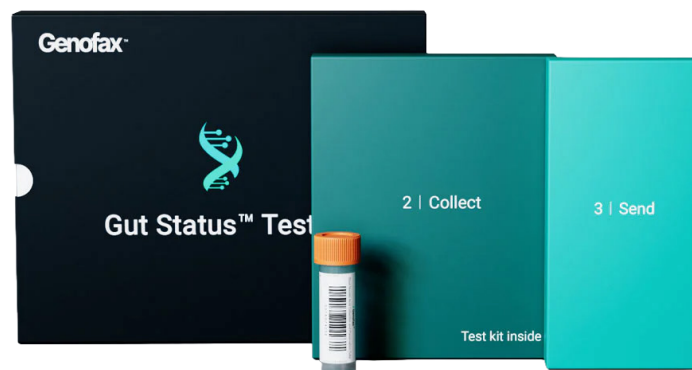
Flow cytometry helps diagnose diseases by rapidly analyzing cells, detecting abnormal cell populations, identifying cancers, immune disorders, and infections with high accuracy, speed, and detailed cellular information—all from a small sample.

BioLab Diagnostics Limited proudly collaborates with Genofax, a USA-based global leader in genomics, microbiome intelligence, and precision health analytics. This partnership enables BioLab to integrate advanced AI-driven genomic analysis, microbiome research, and predictive health modeling into its diagnostic ecosystem.

Through this collaboration, patients in Bangladesh gain access to international-grade genomic insights, more accurate test interpretations, and modern personalized health solutions. Genofax's expertise in bioinformatics, microbiome sequencing, and digital health innovation strengthens BioLab's mission to deliver science-driven, future-ready diagnostic services.

Together, BioLab and Genofax aim to create a bridge between global innovation and local healthcare, making world-class genomic technologies accessible across Bangladesh.

**Website:** [www.genofax.com](http://www.genofax.com)





**Nationwide Booth Network**

Establish BioLab sample collection booths across all divisions, districts, and major points in Bangladesh.

**Eight New Centers by 2030**

Launch and operate a minimum of eight fully equipped diagnostic centers nationwide by 2030.



**BioLab Family Health Card**

Introduce an affordable health card system to ensure quality healthcare services reach every family.





## Innovation & Technology Leadership

Deploy new and innovative diagnostic technologies and expand comprehensive investigation services to advance national healthcare.

## Research & Development Growth

Strengthen in-house research facilities and support all individuals or institutions interested in conducting research.



## National & International Collaboration

Partner with local and global organizations to push the healthcare sector forward through shared expertise and innovation.



**Personalized & Predictive Medicine**

Develop personalized health solutions and predictive diagnostic services using advanced molecular tools.

**Need change**

**Central Reference Laboratory Status**

Position BioLab as a trusted, nationally recognized central reference laboratory for superior accuracy and reliability.



**Guided by Precision, Care & Trust**

Operate with a strong commitment to precision, care, and trust—three core values that define BioLab’s service standards.



The BioLab Family Healthcard is designed to provide lifelong healthcare benefits for every member of your family — today, tomorrow, and for generations to come. With a single card, your entire family gains access to essential medical services, reliable diagnostics, and partner healthcare facilities at an affordable cost throughout their lifetime.

## WHAT MAKES THIS CARD SPECIAL

**Lifetime Health Support:** One card offers continuous healthcare benefits for you, your children, and future generations — ensuring long-term protection and peace of mind.

**Access to Renowned Partners:** Get affordable services through collaborations with leading diagnostic centers, hospitals, clinics, and international healthcare providers — all under one unified network.

**Best Price, Best Quality:** Our goal is simple: to ensure the people of Bangladesh receive high-quality diagnostic and medical services at the most affordable prices.

**Nationwide Accessibility:** Healthcard holders can receive services and support through BioLab's branches, booths, partner centers, and phlebotomy network across Bangladesh.

## Our Purpose

To make world-class healthcare reachable, reliable, and affordable for every family in Bangladesh — now and for the generations ahead.



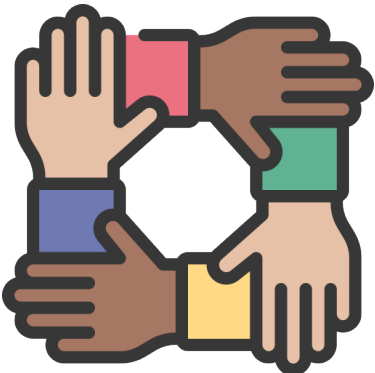
Hospitals, clinics, and diagnostic centers



Corporate organizations



Government & NGO healthcare projects



International research collaborators



Private physicians and healthcare professionals



## ঢাকা উত্তর সিটি কর্পোরেশন

www.dncc.gov.bd



নাইসেস ইস্যুর বিবরণ

ইস্যুর তারিখ : 11/12/2025  
ইস্যুর সময় : 14:06:39



ই-ট্রেড লাইসেন্স



নাইসেস নং : TRAD/DNCC/036071/2023

দ্রষ্টব্য: সকলকর্তৃপক্ষ (সিটি কর্পোরেশন, আইন, ২০০৯/২০০৯ সালের ৩০ নং আইন, এর ধারা ১৭-তে প্রদত্ত ক্ষমতাবলে সরকার প্রণীত আমেশ কর হাউসিং, ২০১৬ এর ১০ অনুচ্ছেদ অনুযায়ী ব্যবসা, বৃত্তি, পেশা বা শিল্প প্রতিষ্ঠানের উপর আরোপিত কর আদায়ের লক্ষ্যে নিয়ে বাণিজ্যিক প্রতিষ্ঠানের আমদানিকৃত আর ট্রেড লাইসেন্সটি ইস্যু করা হলো।

১) ব্যবসার প্রতিষ্ঠানের নাম	: ব্যবসায়িক জায়গা/পাঠানো স্থান
২) ব্যবসার প্রতিষ্ঠানের মালিকের নাম	: সাধন মন্ডল
৩) পিতা/স্বামীর নাম	: সুকুমার মন্ডল
৪) মাতার নাম	: কবিতা মন্ডল
৫) ব্যবসার প্রকৃতি	: আবাসিক-একক
৬) ব্যবসার ধরণ	: জায়গা/পাঠানো স্থান (ছোট)
৭) ব্যবসার প্রতিষ্ঠানের ঠিকানা	: রূপায়ণ সেলেক্টেড (প্লট-১৪), ২৩/৬, মিরপুর রোড, শ্যামলী, ঢাকা-১২০৭
৮) অন্যান্য বিবরণ/নথি/স্বাক্ষর	: ২ কার্ডওয়ান বাজার ওয়ার্ড: ৩০
৯) এনআইডি/পাসপোর্ট/জন্ম নিবন্ধন নং	: ৩৮৩৩৩৬৬২২২
১০) মোবাইল নম্বর	: ০১৯৯৮২২৮০০
১১) অর্থ বছর	: ২০২৪-২০২৫ (নির্ধারিতকৃত)
১২) মালিকের বর্তমান ঠিকানা	: মালিকের স্থায়ী ঠিকানা
১৩) মালিকের নাম	: মোকিম নং:
১৪) মোকিম নং	: মোকিম নং:
১৫) গ্রাম/মহল্লা	: গ্রাম/মহল্লা
১৬) পোস্ট কোড	: পোস্ট কোড
১৭) থানা	: থানা
১৮) জেলা	: জেলা
১৯) বিভাগ	: বিভাগ
২০) জেলা	: জেলা
২১) বিভাগ	: বিভাগ
২২) মোবাইল নম্বর	: মোবাইল নম্বর
২৩) মোবাইল নম্বর	: মোবাইল নম্বর
২৪) মোবাইল নম্বর	: মোবাইল নম্বর
২৫) মোবাইল নম্বর	: মোবাইল নম্বর
২৬) মোবাইল নম্বর	: মোবাইল নম্বর
২৭) মোবাইল নম্বর	: মোবাইল নম্বর
২৮) মোবাইল নম্বর	: মোবাইল নম্বর
২৯) মোবাইল নম্বর	: মোবাইল নম্বর
৩০) মোবাইল নম্বর	: মোবাইল নম্বর

আর ট্রেড লাইসেন্স এর মেয়াদ ৩০ শে জুন, ২০২৬ পর্যন্ত

নাইসেস ও বিজ্ঞান সুপারভাইজার



কর কর্মকর্তা

**ACS.**

Certificate of Registration  
(Quality Management System)

**ASSIST CERTIFICATION SERVICES**

This is to Certify that the Quality Management System of

**BIOLAB DIAGNOSTICS LIMITED**

Rupayan Shelford (14th Floor), 23/6, Mirpur Road, Shyamoli, Dhaka-1207, Bangladesh.

Has been found to be of the Quality Management System Standard

**ISO 9001:2015**

BIOLAB DIAGNOSTICS LIMITED PROVIDES SERVICES IN CLINICAL PATHOLOGY, MOLECULAR DIAGNOSTICS, RESEARCH TESTING, AND CLINICAL REFERENCE LABORATORY SUPPORT.

Assist Certification Services

Certificate Number: **ASIB/INT/1022B/2025** Surv. Audit on or Before: 13/10/2026

Initial Date of Certification: 13/11/2025 Re-certification Due on: 13/11/2028

Date of Certificate: 13/11/2025

Date of Expiry: 12/11/2026

Director:

Date: 13/11/2025



The certificate remains valid only if the organization allows audits anytime without prior notice and passes regular surveillance audits before the given dates. The certificate's renewal depends on a continuation letter from ACS after each successful audit.

**ASSIST CERTIFICATION SERVICES**

www.acsglobal.xyz  
operation@acsglobal.xyz

Accred Services International Board (Europe) Limited [ASIB]

Government of the Peoples Republic of Bangladesh  
Directorate General of Health Services  
Mohakhali, Dhaka 1212

## License for Private Diagnostic Center

This License is issued under the medical practice and Private Clinics and Laboratories (Regulation) ordinance, 1982 (Section-10(4) of ordinance iv of 1982) to set up and run a Pathology Center

License No	: HSM4526012
Reg. Code	: HSM30916
Name	: Biolab Diagnostics
Address	: 3/11, Humayan Road, Block-B, Mohammadpur, Dhaka-1207
Approved Year	: 2024-2025
License approval date	: 28 October, 2024
Date of expiry	: 30 June, 2025
Name of the Owner	: SADHON MONDOL
Facility Category	: Category-B

This license is system generated & Approved by Directorate General of Health Services. It doesn't need any signature.

1. According to categorization, all Pathological test can be done except Blood Transfusion activity.
2. Violation of categorization will be marked as punishable offense.
3. This is not transferable without prior written permission from the Licensing authority.
4. Change of name/address/location of the premises without prior permission of the Licensing authority will render this license invalid.
5. Any violation of the Bangladesh Medical Dental Council (Act xvi of 1980), or of the Medical practice and private clinic and laboratories (Regulation) Ordinance, 1982 will render this license invalid.
6. The license may be cancelled/suspended/revoked by the licensing authority at any time if found any irregularities against the law.
7. Failure to renew the certificate for registration within one month from the date of expiry of its validity, will amount to its cancellation from the date of expiry as noted above.
8. The license shall be displayed in a prominent place of the premises

Government of the People's Republic of Bangladesh  
National Board of Revenue

Mushak-2.3

Customs, Excise and VAT Commissionerate, Dhaka (West)  
Mohammadpur Division

## Value Added Tax Registration Certificate

This is to certify that the person whose details are given below is registered under Value Added Tax and Supplementary Duty Act, 2012 (Act No. 47 of 2012)

**BIN : 006074257-0402**

Name of the Entity	: BIOLAB DIAGNOSTICS
Trading Brand Name	: BIOLAB DIAGNOSTICS
Old BIN	: N/A
e-TIN	: 873064851210
Address	: 22/2, Babor Road, Cosmopolitan Center; Mohammadpur PS; Dhaka-1207; Bangladesh
Issue Date	: 23/04/2024
Effective Date	: 04/2024
Type of Ownership	: Proprietorship
Major Area of Economic Activity	: Services



This is a system generated certificate and doesn't require any signature



## Contact us



+88 09639246330-3  
+88 01962-690666



**Email**  
info@biolabds.com



**Website**  
www.biolabds.com



Rupayan Shelford (14th floor), 23/6, Mirpur Road Shyamoli,  
Dhaka-1207, Bangladesh



## OUR SISTER CONCERNS

 **BIOLAB INTERNATIONAL LIMITED**  
BIOLAB Total Diagnostics Solutions

 **BIOLAB WELLNESS CENTER LIMITED**  
GOOD HEALTH AND WELLBEING

**TOTAL SOLUTIONS OF  
HEALTH CARE**